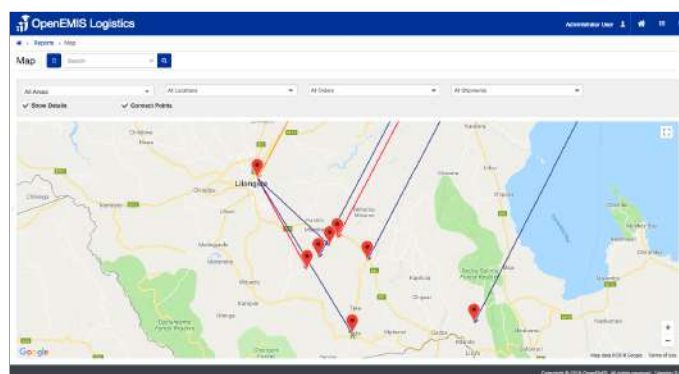


OpenEMIS Logistics

Manage and track shipments

OpenEMIS Logistics is a web and mobile friendly application used to manage and track the delivery of education commodities to any location in the world. Shipments are centrally planned and monitored to make sure deliveries reach the intended schools.

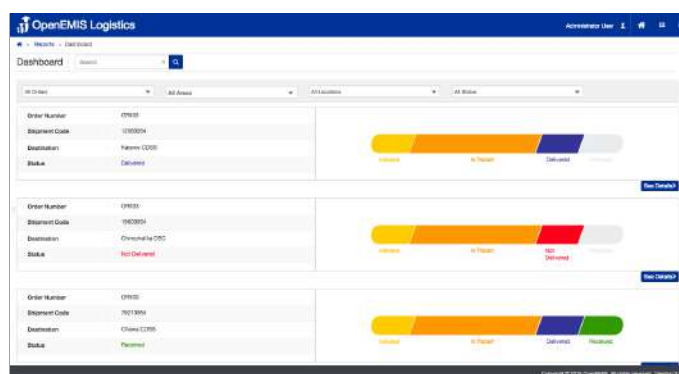
The system is highly flexible and available in any language that can be customized to any context.



Centralized Management

All shipments are organized by orders that consist of consignments of various packages.

The OpenEMIS Logistics map shows all shipments that are active in the system. Narrow down the results by area, location, order, and shipment.



Monitoring Dashboards

Check the progress of deliveries and the efficiency of shipments.

View the detailed activities of shipments, and monitor the key performance indicators on the OpenEMIS Logistics dashboard.

Our school is expected to receive the following textbooks by September 30th 2017.

- 1. Math Level 1 Textbooks
- 2. Math Level 2 Textbooks
- 3. English Level 1 Textbooks
- 4. English Level 2 Textbooks

Text "Subscribe 50002" to (240)623-BOOK from your mobile phone to receive alerts on this delivery.

Where 57291044

Shipment Location: Test School. Shipment Code: 57291044. OpenEMIS Logistics.

What 57291044

Package Details: English101 Grade 9, Quantity-30, Math101 Grade 6, Quantity-30. Shipment Code: 57291044. OpenEMIS Logistics.

When 57291044

Shipment Estimated Delivery Date: 2018-01-31. Shipment Code: 57291044. OpenEMIS Logistics.

Community Engagement

An informed community is likely to keep distributors accountable throughout the delivery.

The system increases transparency by engaging parents and teachers in the shipment process through SMS and IVR notifications.

OpenEMIS Logistics & Blockchain

What is Blockchain?

A blockchain is a decentralized, distributed and public digital ledger that is used to record transactions across many computers so that the record cannot be altered retroactively without the alteration of all subsequent blocks and the collusion of the network.

This makes blockchains secure and suitable for the recording of vital events, digital currencies, persistent digital IDs, property registration, smart contracts, health records, and education records.

Blockchain enables the exchange of value without powerful intermediaries acting as arbiters of money and information. A blockchain database is managed autonomously using a peer-to-peer network and a distributed timestamping server.

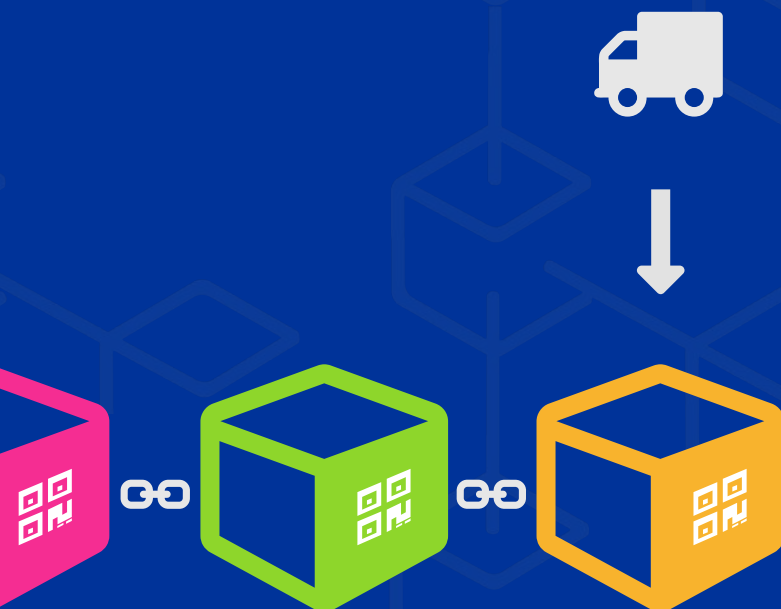


How will Blockchain work with OpenEMIS Logistics?

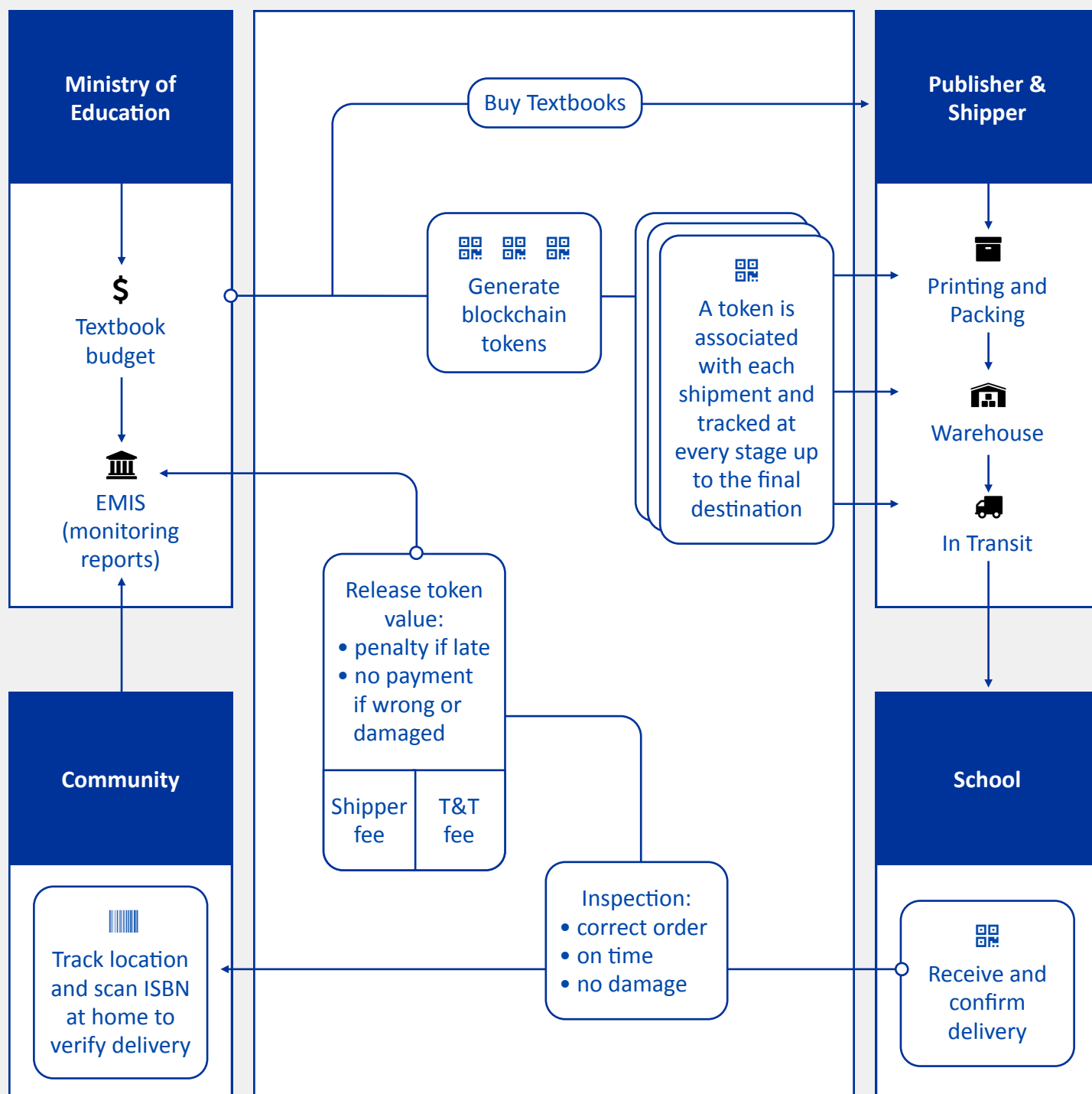
When the Ministry of Education orders books from a publisher, a blockchain token is generated. Each token is associated to a shipment that is tracked all the way through to the final destination, while recording data on the responsible actor, the shipment's location, and the date and time it was recorded; this is the "block" in blockchain.

Shipments are inspected to see if all, some, or none of the conditions of the tokens have been met (e.g., delivered on time, complete shipment count, no damages). Once verified, the token triggers payment to the responsible actor.

The results-based financing model can leverage blockchain technology to trigger cash transfers when verified milestones are met.



OpenEMIS Logistics & Blockchain Model



Reach out to contact@openemis.org if you are interested in OpenEMIS Logistics!

OpenEMIS Logistics Pricing

No matter the size of the distribution, track deliveries from beginning to end

Small Less Than 100,000 items	Medium 100,000 ~ 1,000,000 items	Large More Than 1,000,000 items
USD 0.39 /item*	USD 0.11 /item*	USD 0.10 /item*
Implementation Services: Installation and Configuration, Data Management, Project Management		
Technical Support Services: Cloud Hosting, Upgrades, Service Desk, Local Support, SMS Bundle		
Capacity Building: OpenEMIS Logistics Training and Advisory Services		
Advocacy Materials: Poster Design, Production, Delivery		

** Average cost, based on a 3 year project*

System Integrations



OpenEMIS Logistics
Web Application



OpenEMIS SMS
RapidPro



OpenEMIS Scanner
Mobile Application

System Requirements

Operating System

Linux, Windows, or Macintosh

Webserver

Apache with PHP or IIS with PHP v5.4

Database

MySQL v5, PostgreSQL or SQL Server

Browser

IE, Chrome, Firefox or Safari

Reach out to contact@openemis.org if you are interested in OpenEMIS Logistics!