

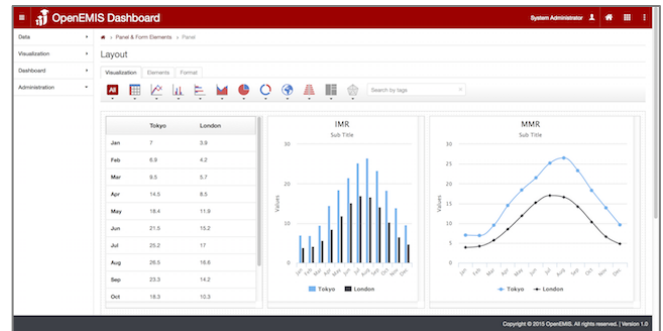


### Overview

OpenEMIS Dashboard is a web-based application to build, share and/or view selective indicator-based data in a predefined layouts using tables, graphs and maps online and offline.

### Benefits

- ✓ Design dashboards based on custom layouts, objects and colors
- ✓ Monitor and compare specific indicators at different levels and for different purposes
- ✓ Share dashboards with others



### Features

- ✓ Connect to multiple data sources
- ✓ Select visualization objects
- ✓ Design a dashboard layout
- ✓ Publish and share the dashboard

### Requirements

- ✓ Operating system - Linux, Windows or Macintosh
- ✓ Webserver – Apache with PHP or IIS with PHP v5.4
- ✓ Database – MySQL v5, PostgreSQL or SQL Server
- ✓ Browser - IE, Chrome, Firefox or Safari

### Disclaimer

*This datasheet is for informational purposes only. THERE ARE NO WARRANTIES, EXPRESS OR IMPLIED, IN THIS SUMMARY. Companies, names, and/or data used in screens and sample output are fictitious, unless otherwise noted.*