

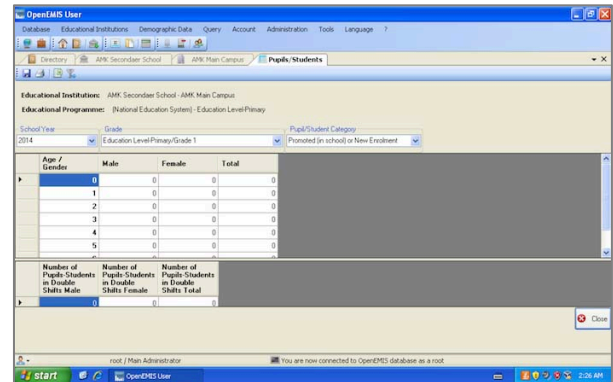
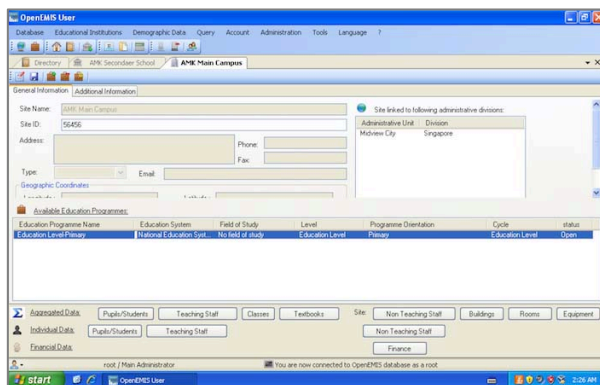


Overview

OpenEMIS Windows is the first version of OpenEMIS. There are separate user and admin applications.

Benefits

- ✓ Stores data Institutions, Students, Teachers and Staff
- ✓ Data can be entered as aggregated or individual registers
- ✓ Configure Administrative Boundaries and Education Structures
- ✓ Enter demographic data



Features

- ✓ A separate User and Builder application
- ✓ Connect to an SQL Server database on a local computer or central server
- ✓ Integrated SQL Query and OLAP Reporting
- ✓ Generate aggregated data from individual registers

Requirements

- ✓ Operating system - Windows
- ✓ Webserver – IIS
- ✓ Database – MySQL
- ✓ Browser - IE

Disclaimer

This datasheet is for informational purposes only. THERE ARE NO WARRANTIES, EXPRESS OR IMPLIED, IN THIS SUMMARY. Companies, names, and/or data used in screens and sample output are fictitious, unless otherwise noted.